



ที่ มท ๐๘๑๐.๒๕๖๐.๑๕๐

กรมส่งเสริมการปกครองท้องถิ่น

ถนนนครราชสีมา เขตดุสิต กทม. ๑๐๓๐๐

๑๕ มิถุนายน ๒๕๖๐

เรื่อง ประชาสัมพันธ์การสมัครเข้าร่วมโครงการทุนการศึกษาระดับปริญญาโท

เรียน ผู้ว่าราชการจังหวัด ทุกจังหวัด

สิ่งที่ส่งมาด้วย สำเนาแผ่นพับและใบปลิวประชาสัมพันธ์โครงการฯ (ภาษาอังกฤษ) จำนวน ๑ ชุด

ด้วย National Graduate Institute For Policy Studies (GRIPS) สถาบันการศึกษาซึ่งตั้งอยู่ ณ กรุงโตเกียว ประเทศญี่ปุ่น แจ้งขอความร่วมมือให้กรมส่งเสริมการปกครองท้องถิ่นประชาสัมพันธ์โครงการทุนการศึกษาระดับปริญญาโท ระยะเวลา ๑ ปี และ ๒ ปี หลักสูตร นโยบายสาธารณะ โดยหลักสูตรดังกล่าว ดำเนินการเรียนการสอนเป็นภาษาอังกฤษ และกำหนดคุณสมบัติเบื้องต้นของผู้สมัครว่าต้องมีอายุระหว่าง ๒๔ - ๓๖ ปี ทั้งนี้ ผู้สนใจสมัครเข้าร่วมโครงการฯ สามารถดำเนินการสมัครในรูปแบบออนไลน์ ระหว่างเดือนสิงหาคม - พฤศจิกายน ๒๕๖๐

กรมส่งเสริมการปกครองท้องถิ่น จึงขอความร่วมมือจังหวัดประชาสัมพันธ์โครงการดังกล่าว ให้ข้าราชการในสังกัดสำนักงานส่งเสริมการปกครองท้องถิ่นจังหวัด และข้าราชการ/พนักงานส่วนท้องถิ่นทราบ หากมีความประสงค์จะสมัครรับทุนฯ ขอให้ดำเนินการสมัครในรูปแบบออนไลน์ด้วยตนเองตามห้วงเวลาที่กำหนด และแจ้งให้กรมส่งเสริมการปกครองท้องถิ่นทราบผ่านต้นสังกัด รายละเอียดปรากฏตามสิ่งที่ส่งมาด้วย

จึงเรียนมาเพื่อโปรดพิจารณาดำเนินการต่อไป

ขอแสดงความนับถือ

(นายธนา ยันตรโกวิท)

รองอธิบดี ปฏิบัติราชการแทน
อธิบดีกรมส่งเสริมการปกครองท้องถิ่น

กองพัฒนาและส่งเสริมการบริหารงานท้องถิ่น
ส่วนวิชาการและวิจัยเพื่อการพัฒนาท้องถิ่น

โทร. ๐ ๒๒๔๑ ๙๐๐๐ ต่อ ๒๒๑๒

โทรสาร ๐ ๒๒๔๓ ๑๘๑๒



Public Policy Program

NATIONAL GRADUATE INSTITUTE FOR POLICY STUDIES



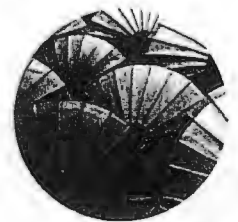
Study in English

GRIPS is a leader in English-based education in Japan. You will learn from world-class academics and leading policy makers.



Vibrant Tokyo

Study and live in Japan's bustling capital, undeniably one of the world's most captivating cities.



Summer Program

The capstone of the GRIPS experience, offering an exciting range of events to enhance your practical policy-making skills.

The Public Policy Program aims to educate leaders, public managers, and policy analysts in the policy tools needed for efficient governance.

The one-year program (MP1) equips mid-career managers and leaders with the fundamental skills and knowledge needed to be effective managers in the public sector. Students develop familiarity with all phases of the policy cycle. They are required to write a policy report as partial fulfilment of the degree of Master of Public Policy or Master of Public Administration.

The two-year program (MP2) provides pre- and early-career professionals and staff members with the technical skills needed to be professional policy analysts. The program provides a strong platform for advanced research (including doctoral studies). Students are required to write a master's thesis as partial fulfilment of the degree of Master of Arts in Public Policy.

1

ACADEMIC & PRAGMATIC

The combination of academic & practical courses is GRIPS hallmark

2

FLEXIBLE CURRICULUM

You may choose from a wide variety of recommended and elective courses

GLOBAL NETWORK

You will join a robust network of over 4000 GRIPS alumni in more than 100 countries

Admissions

All application procedures should be completed online.

Qualifications

You are:

- An ambitious individual with a career plan that involves leadership
- Aged in your mid 20's to mid 30's
- A mid-career government professional wishing to enhance your skills with a professional graduate qualification
- Proficient in English (TOEFL PBT 550; iPT 79 or equivalent)

Scholarships

Full scholarships - funded by the Asian Development Bank (ADB), the Japanese government (MEXT) and others - are available for qualified candidates.

Important Dates*

- Online applications open: Early August 2017
- Application deadline: November 2017
- Admissions notification: May-July 2018
- Enrollment: October 2018

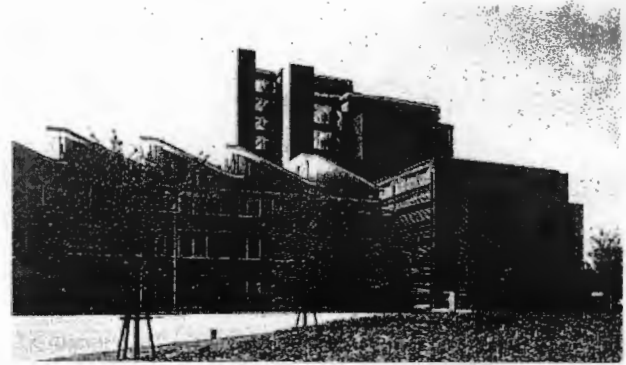
* Please check our website for exact dates

Degrees offered

- Master of Public Policy (MP1)
- Master of Public Administration (MP1)
- Master of Arts in Public Policy (MP2)



*Gateway to
Global Leadership*



Career Destinations

Graduates from this program are expected to hold executive positions in national or local government and international organizations, or to be researchers in public policy. Graduates' career paths include Office of the President/Prime Minister, Ministry of Finance, Ministry of Commerce & Industry, Ministry of Labour & Human Resources, Ministry of Home Affairs, Ministry of Foreign Affairs, Ministry of Public Administration, Ministry of Land & Energy, Central Bank, Development Bank, Stock Exchange, Public Utilities (Electricity, Gas, Water) and Universities

About GRIPS

The National Graduate Institute for Policy Studies (GRIPS) is a global hub for world-class policy research and education. We prepare public policy leaders and professionals who will play key roles in democratic governance, and we are committed to providing quality education that meets the needs of both students and the government agencies they serve. Our core tenets are an interdisciplinary approach to policy research that is set within a truly multinational environment and a focus on equipping public policy professionals with the skills they need to serve effectively on the world stage.

Further Information & Inquiries

Please check our website for program details and application procedures.

GRIPS homepage: <http://www.grips.ac.jp>

Admissions Office: <http://www.grips.ac.jp/en/admissions/index/>

If you have any questions, please do not hesitate to contact our Admissions Office.

Email: admissions@grips.ac.jp

Phone: +81-3-6439-6046

Fax: +81-3-6439-6050

Address: 7-22-1 Roppongi, Minato-ku, Tokyo 106-8677



1

NATIONAL GRADUATE INSTITUTE FOR POLICY STUDIES

2016-2017



*Gateway to
Global Leadership*



Message from the President

The National Graduate Institute for Policy Studies (GRIPS) conducts policy research related to the current affairs of Japan and the world and provides graduate education in advanced policy studies designed primarily for mid-career administrative and government officials from Japan and other countries. Students benefit from high-quality instruction in economics, political science, public administration, international relations, engineering, and other subjects and from the examination of selected case studies reflecting the experience of Japan and other Asian countries in the course of modernization and rapid economic growth.

I hope that you will choose to come to GRIPS and seize the opportunity to engage in friendly competition with people who, like you, will go on to be future leaders.

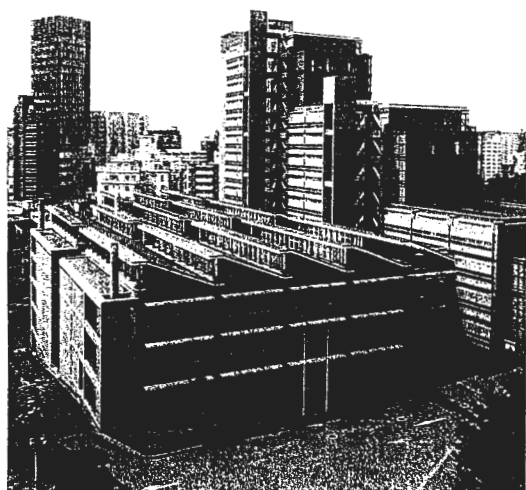
Akihiko Tanaka

Why GRIPS?

- Select from a wide range of advanced degree options and specialize in an area that interests you
- Combine discipline-specific learning with advanced training in leadership, interdisciplinary cooperation, and effective management
- Study in English, learning from world-class academics and leading policy makers
- Network and liaise worldwide with over 4,000 distinguished alumni involved in policy making
- Engage with a richly diverse student body and faculty

Brief History

In 1977, the Graduate School of Policy Science (GSPS) was established at Saitama University to promote interdisciplinary policy research and education. In 1997, GRIPS succeeded GSPS to become an independent national graduate university with the mandate to promote high-level policy research and respond to various domestic and international needs by drawing on international intellectual cooperation.



Target Students

- Mid-career public officials with strong leadership and managerial potential
- Individuals with strong academic capabilities and the desire to become professional policy analysts or to pursue an academic career

Admissions

Deadlines

Admission is competitive and involves careful, holistic consideration of each candidate through both document screening and interviews. For candidates who wish to be considered for a scholarship allocated through GRIPS, the application deadline is typically in November.

Scholarships

Full scholarships are available for exceptionally qualified candidates who have been accepted for study at GRIPS. These scholarships are provided by the Japanese government (Ministry of Education, Culture, Sports, Science and Technology [MEXT]) and international organizations, as well as GRIPS.

For details, please visit the Admissions Office's website at <http://www.grips.ac.jp/en/admissions/index/>.

Students at GRIPS share the same time and space, studying together in the same classrooms, thinking together about—and debating—the same issues, and taking advantage of multiple opportunities for collaboration and networking, which often leads to lifelong friendships and connections.



Intellectual and Cultural Experiences

GRIPS is dedicated to providing broad intellectual and cultural experiences to students. During their studies, students have opportunities to participate in cultural events, field trips, sports activities, and homestay programs.

The GRIPS Summer Program features a variety of activities that focus on the enhancement of students' practical policy-making skills.



Our Faculty

GRIPS boasts a nearly 300-member faculty, which includes world-class academics and distinguished practitioners with many years of experience in public- or private-sector policy analysis and management. Our faculty's expertise spans a wide array of policy issues and areas of research, which allows us to offer a broad range of courses in policy-related fields.

Center for Professional Communication

The mission of the Center for Professional Communication is to support GRIPS' students, faculty, and staff in developing effective professional communication skills and competencies needed to communicate productively in an environment of multiple stakeholders. To this end, we offer a range of instruction and support in fundamental areas of professional communication in English and Japanese including policy paper writing, professional speaking, grant proposal writing, and digital communications. We also provide opportunities for cultural and academic exchanges through a self-access learning center, organize seminars and special events related to all aspects of professional communication, and prepare customized materials for students and staff on academic and professional writing and language learning.

Student Support

We understand the challenges international students face when adjusting to a new culture and environment. Accordingly, the Student Office provides substantial administrative assistance to international students so that they can focus on accomplishing their academic goals at GRIPS. The Student Office assists with a variety of matters such as accommodation arrangements, immigration procedures, and international cultural exchanges. International students will be assigned to off-campus accommodations in the Tokyo metropolitan area based on their requests. At GRIPS, the Health Services Center provides medical and psychological counseling services to all students.





"The most important thing for me is that I could learn—often first-hand from my fellow students—about current global issues and international efforts

that are going on in the world. GRIPS gave me precious friends and opened my eyes to the world."

(Alumni: Ayako Tamiya, Japan; International Development Studies Program, 2010)

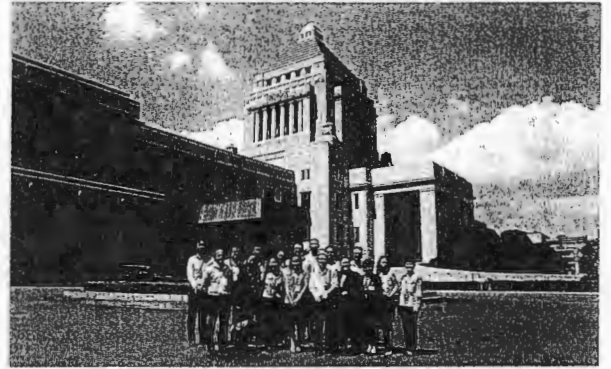


"GRIPS is principally about multidisciplinary and practical approaches to the study of policy and economics. It is also about the need to better

understand the political economy of Japan and Asia, as a whole, from a global public policy perspective. For me, as a student from Africa, this was very useful. Staff at GRIPS are available 24/7, and of course, the multicultural and professional network at GRIPS propels one to become a truly global citizen."

(Alumni: Tenywa Edward, Uganda; One-year Master's Program of Public Policy, 2012)

Tailor-Made Short-Term Training



The Executive Development Center for Global Leadership (CGL) was established in 2013 in response to an increasing demand for short-term training for government officials, particularly for senior executives, middle management level officials and public policy professionals.

GRIPS has responded to specific requests from foreign government organizations by providing tailor-made short-term training programs matched to specific requests and necessity. By establishing CGL, GRIPS can provide various kinds of short-term training programs more proactively and systematically.

Examples of Short-Term Training Program Topics:

- Leadership Development and Management in the 21st Century
- Public Management in General
- Structures and Processes of Government
- Organizational Management
- Civil Service Systems and Human Resource Management
- Tools of Government
- Legal Systems and Legislative Review
- Administrative Reform and Innovation
- Good Governance
- Trust in the Government
- Ethics and Anti-Corruption
- Local Governance in General
- Local Government Administration
- Local Government Financial Administration
- Management of Inter-Governmental Relations
- Public Policy Analysis
- Specific Substantive Policies

In response to specific demands, short-term training programs often contain a mixture of the following components:

- Lectures delivered by government officials, business executives, specialists from research institutions, and professors from GRIPS and other universities
- Field trips or visits to government offices and other places of interests related to themes of training
- Group discussions and workshops with government officials and GRIPS students
- Participants' presentations and policy papers
- Exchanges with people from Japan

For details, please visit the CGL's website at <http://www.grips.ac.jp/g-center/en/>.

Campus and City

GRIPS is located in Roppongi, which is a cosmopolitan, multicultural, and bustling area of Tokyo. Roppongi boasts several large shopping and dining complexes and numerous individual restaurants, art museums, performance venues, and shops. Additionally, Roppongi is close to the Japanese Diet and government ministries.

GRIPS is situated on an innovatively designed campus located next to the National Art Center. The graduate school building features spacious, fully equipped classrooms, individual study spaces for students, a sky-lit atrium with panoramic windows and indoor terraces, Japanese-style rooms, a modern fitness center, and a beautiful multi-purpose conference hall.



GRIPS at a Glance (as of April 2016)

GRIPS is the only national stand-alone graduate school for policy studies in Japan.

- **Location: Central Tokyo (Roppongi)**
- **Degrees awarded:**
Master's degrees and doctorates
- **Language of instruction: English**
- **Academic calendar: October-September**
- **Financial assistance: More than 90% of international students have full scholarships**
- **Total number of students: 421**
- **Average student age: 33**
- **International students: 66%**
- **Student-faculty ratio in master's programs: 3 to 1**
- **Alumni working in the public sector: 79%**
- **Number of alumni: Over 4,000**



Photo by Masao Nishikawa

5

Our Programs

Master's Programs

- **Young Leaders Program (YLP)**
This program focuses on exposing students in a systematic way to the fundamentals of politics, government and public administration, public policy, management and leadership. The program prepares students to work as senior executives and leaders in the national, sub-national and local governments as well as in other public sector organizations.
- **One-year Master's Program of Public Policy (MP1)**
This program equips managers and leaders with the skills and knowledge necessary for analysis, implementation, and evaluation of public policy. Students who enroll in this program become part of a global network of leaders.
- **Two-year Master's Program of Public Policy (MP2)**
This program conveys technical policy analysis skills to early-career professionals in local or national governments, international organizations, or policy institutes.
- **Macroeconomic Policy Program (MEP)**
The aim of this program is to enable macroeconomic policy professionals to plan and maintain robust national economies by equipping them with an understanding of macroeconomic fluctuations and the roles of monetary and fiscal policies in domestic and global economies.
- **Public Finance Program (PF)**
This program provides students with the conceptual understanding and technical competence they need to become leaders in taxation and customs.
- **Economics, Planning and Public Policy Program (EPP)**
This is a joint two-year GRIPS-Indonesia Linkage program offered in conjunction with top national universities in Indonesia. The program is aimed at preparing local and central government officials who will contribute to good governance and economic development in Indonesia.
- **Disaster Management Policy Program (DMP)**
This program equips professionals from developing countries with effective approaches to, and techniques for, coping with natural disasters, as well as with engineering knowledge and skills needed to minimize seismic risks and counteract widespread water hazards.
- **Maritime Safety and Security Policy Program (MSP)**
This program is designed and administered jointly by GRIPS and the Japan Coast Guard Academy. Students benefit from both institutions' resources in the fields of public policy, security studies, maritime safety, and maritime security.
- **Graduate Program in Japanese Language and Culture (JLC)**
This program promotes rigorous examination of Japanese pedagogy and Japanese culture. Graduates of this program become leaders in Japanese language education in their own countries.

Ph.D. Programs

Our Ph.D. programs prepare a new generation of public policy researchers, scholars, and professionals. The programs stress the development of theoretical, conceptual, and methodological knowledge as well as advanced skills needed for high-level policy analysis in government, universities, and international organizations. The GRIPS Global Governance Program and the Policy Analysis Program are 5-year doctoral programs designed for bachelor's degree holders; all other doctoral programs are 3-year programs designed for master's degree holders.

5-Year Ph.D. Programs

- GRIPS Global Governance Program (G-cube)
- Policy Analysis Program (PA)

3-Year Ph.D. Programs

- Public Policy Program
- Security and International Studies Program (SISP)
- State Building and Economic Development Program (SBED)
- Disaster Management Program
- Science, Technology and Innovation Policy Program (STI)
- Graduate Program in Japanese Language and Culture (JLC)

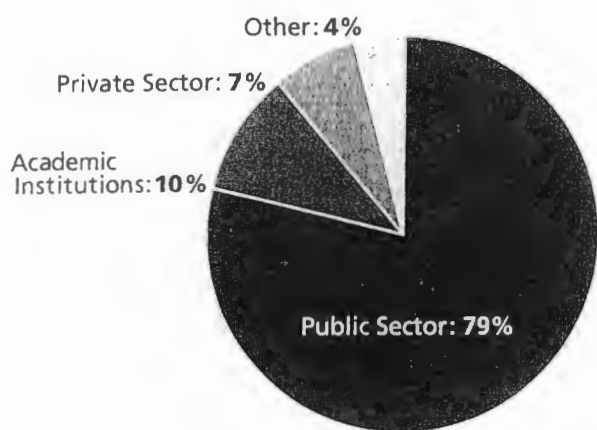


GRIPS Alumni Network

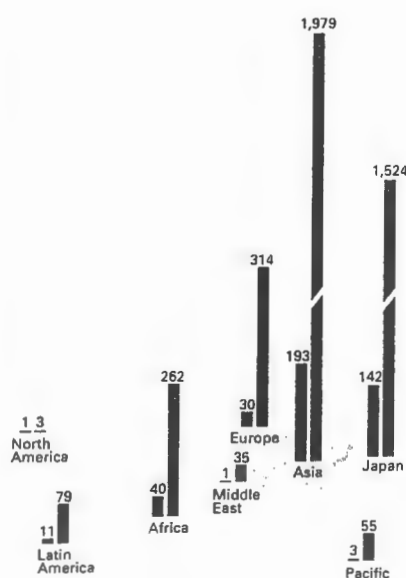
As a GRIPS graduate, you will join an impressive network of over 4,000 alumni who are actively shaping future policies in more than 100 countries around the world. The GRIPS Alumni Network ensures that the connections you have made are lifetime bonds by keeping you in touch with fellow alumni and the school.



Where are GRIPS Alumni working?



GRIPS/GSPS Alumni in the World (as of April 2016)



Asia 22 countries & regions	Bangladesh	138	Bhutan	30	Brunei	3	Cambodia	91	China	210	India	49
	Indonesia	392	Japan	1,524	Republic of Korea	64	Laos	33	Malaysia	110	Maldives	10
	Mongolia	73	Myanmar	94	Nepal	68	Pakistan	83	Philippines	161	Singapore	7
	Sri Lanka	60	Thailand	152	Viet Nam	149	Taiwan	2				
Pacific 8 countries	Australia	39	Fiji	10	New Zealand	1	Papua New Guinea	3	Samoa	1	Vanuatu	1
North America 2 countries	U.S.A.	2	Canada	1								
Latin America 17 countries	Belize	1	Brazil	6	Chile	2	Colombia	7	Costa Rica	2	Cuba	1
	Dominican Republic	5	Ecuador	3	El Salvador	14	Guatemala	3	Haiti	1	Jamaica	2
	Mexico	1	Nicaragua	8	Paraguay	3	Peru	17	Venezuela	3		
Europe (including NIS countries) 29 countries	Albania	3	Armenia	2	Azerbaijan	6	Bulgaria	9	Czech Republic	11	Georgia	10
	Germany	3	Greece	1	Hungary	11	Iceland	1	Italy	2	Kazakhstan	41
	Kyrgyz Republic	56	Latvia	1	Lithuania	1	Former Yugoslav Republic of Macedonia	2	Moldova	2	Netherlands	3
	Poland	16	Romania	9	Russia	1	Serbia	2	Slovakia	5	Spain	1
	Switzerland	1	Tajikistan	16	Turkmenistan	5	Ukraine	7	Uzbekistan	86		
Middle East 7 countries	Afghanistan	13	Iran	2	Jordan	1	Saudi Arabia	2	Syria	2	Turkey	14
	Yemen	1										
Africa 27 countries	Algeria	4	Burundi	1	Cameroon	1	DR Congo	1	Cote d'Ivoire	3	Egypt	9
	Ethiopia	31	Ghana	31	Guinea	1	Kenya	36	Lesotho	1	Liberia	2
	Madagascar	3	Malawi	2	Mauntius	1	Mozambique	2	Nigeria	4	Rwanda	4
	Sierra Leone	5	Republic of South Africa	1	South Sudan	1	Sudan	2	Tanzania	37	Tunisia	1
	Uganda	30	Zambia	29	Zimbabwe	19						

Total number of countries and regions: 110 Total number of alumni: 4,251

GRIPS

7-22-1 Roppongi, Minato-ku, Tokyo, 106-8677, Japan

TEL : +81-3-6439-6000 FAX: +81-3-6439-6010 URL: <http://www.grips.ac.jp/>

GRIPS Admissions Office

TEL : +81-3-6439-6046 FAX: +81-3-6439-6050 E-mail: admissions@grips.ac.jp

Published by the National Graduate Institute for Policy Studies (GRIPS)

Design: Satoshi Ando (pickles design)

© GRIPS 2017